

Information for Car show clubs and exhibitors.

Thankyou for your attendance at the Lake Macquarie Autumn Fair on May 4th 2024 organized by the Rotary Clubs of Warners Bay, Cardiff, Morriset, Toronto Sunrise and Toronto at Speers Point Park, Lake Macquarie. The fair will feature a large number of community activities, charity stalls and food vendors, with expectations of up to 10,000 visitors. The Rotary clubs aim to provide fun activities for families and children, plus raise funds for Rotary Club activities in our local area and internationally via arms of Rotary and other agencies.

The following maps provide locality and entry information to the fair at Speers Point Park. Approximately 80 cars from 8 local car clubs will attend the car show.

Entry

Gates will open for car entry at 7am. Please time your arrival so the you can be parked before approximately 8.15. The fair starts officially at 9.00, but based on last year's experience there will be plenty of people in the park from about 8.00am. Please see the attached maps and park layout. Marshals will direct you to your location in the park which is included on the following map.

Signage

You are very welcome to display your clubs flagging or any other individual display material, but NO PEGGING can be used to secure these. Please use weights or sandbags due to underground water and electrical services.

Exit

The event closes at 4pm. I encourage exhibitors to stay as long as possible, but most activity in the park tails off after 3pm. We realise that some owners may need to leave before then, but request that if leaving when there are a lot of people in the park, you request a traffic marshal to escort you to the nearest exit. The park will still be very busy with lunchtime crowds at that time so cars must only be moved under the direction of a marshal to ensure the safety of the public.

Rubbish

Please take your rubbish with you.

Wet Plan

If there is significant rain in the week before the fair, Lake Macquarie Council will decide on the Friday before the event whether it can proceed or what aspects need to be cancelled. The car display is obviously a potential problem if the park is too wet as 80 cars driving over the grass will not be good if the surface is soft. If there is any doubt, I will liaise with the council ahead of the event and inform you as soon as I know.

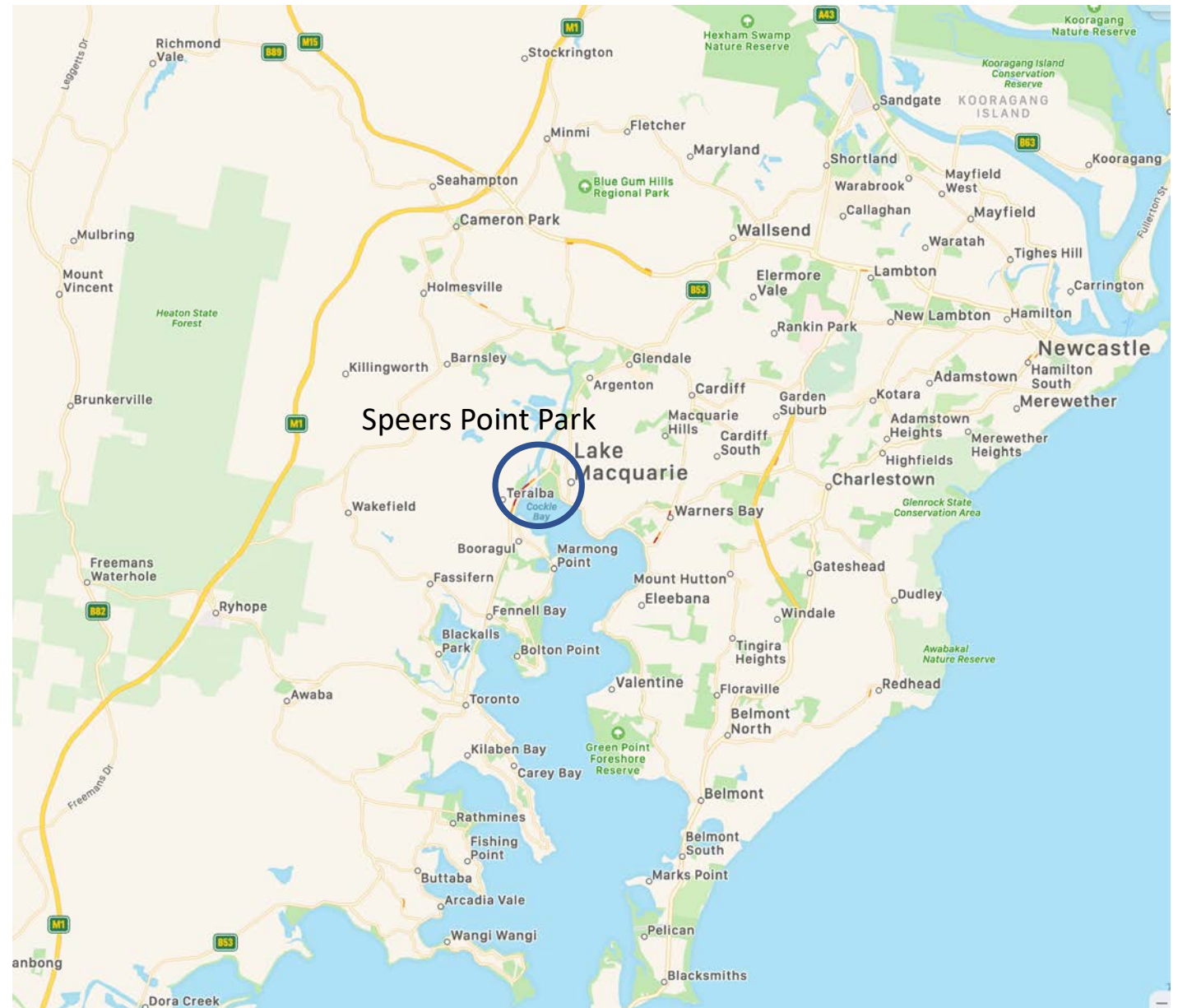
Enquiries to:

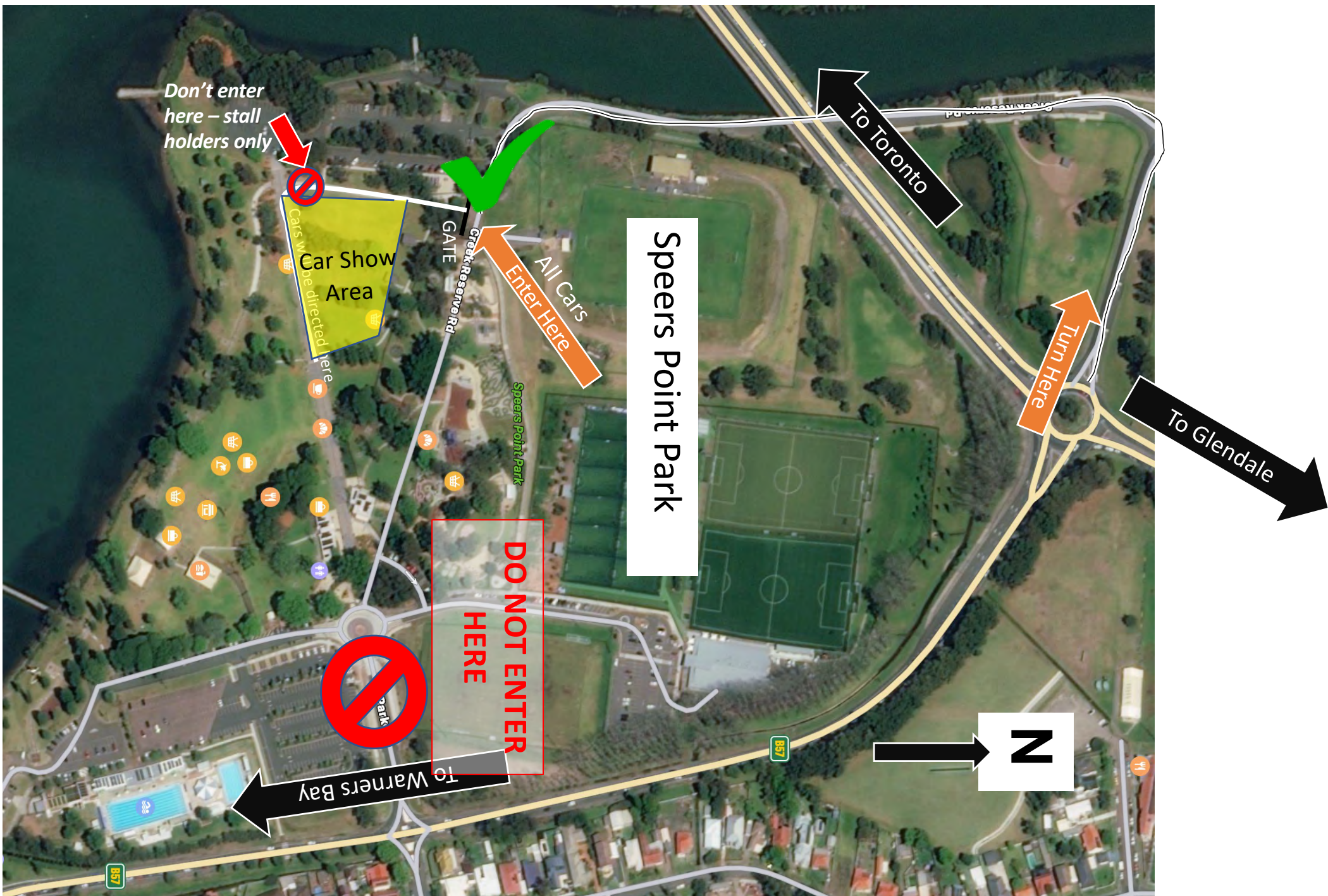
Kim Henley

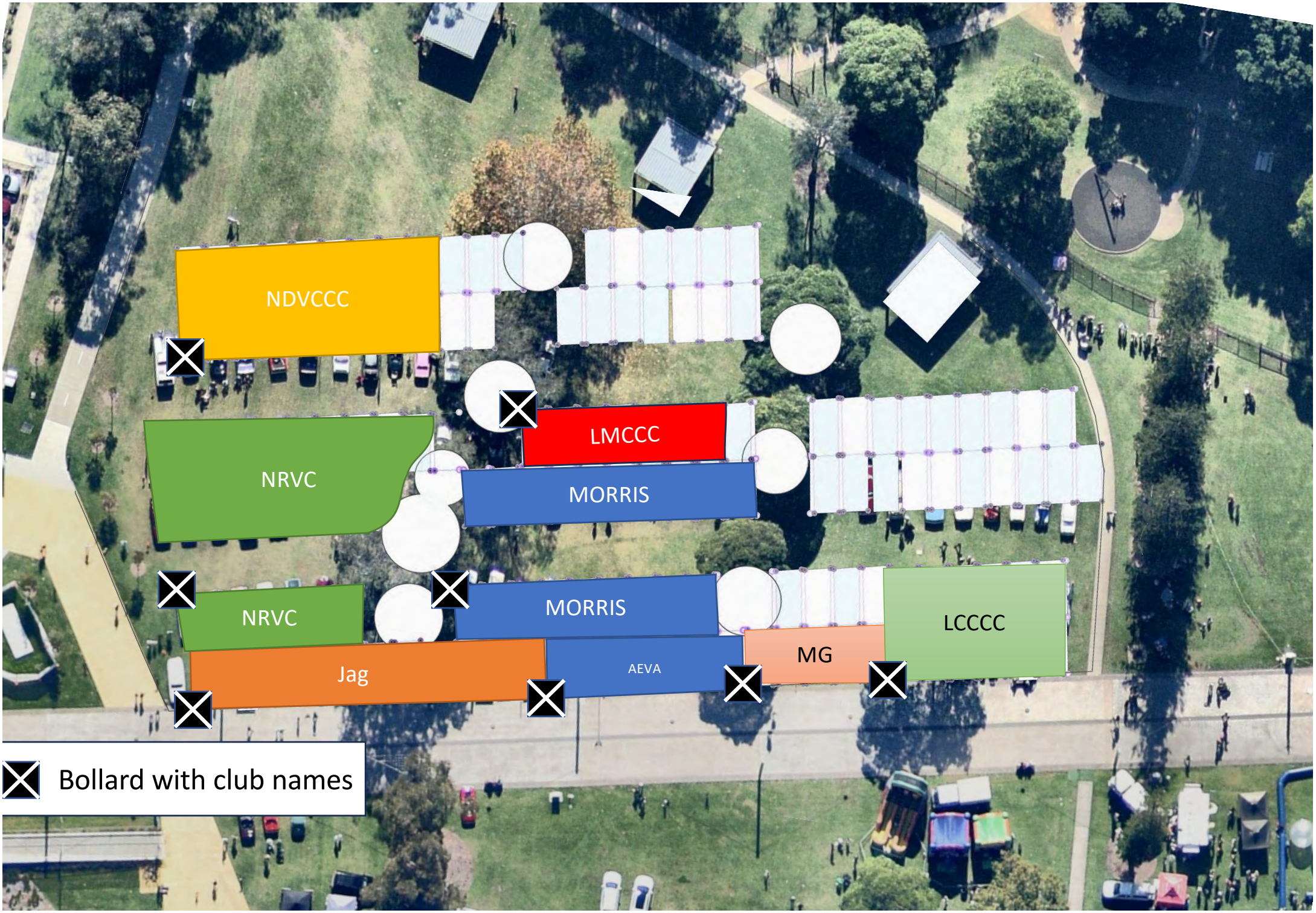
Kim.Henley@bigpond.com

0423 849 232

Locality Map







⊠ Bollard with club names